

LINEAR TITAN HIGHBAY

Product Features

- Dust and weatherproof rated highbay
- Elliptical optical lens as standard with 30°x70°, 60°x90° or 40°x110°
- Die-cast aluminium housing with electrostatic polyester powder coating
- Polycarbonate optic with polycarbonate integrated lenses
- Suspended or surface mounting
- L80/B10 @ 50,000 burning hours
- Nominal voltage 120-277V 50~60hZ

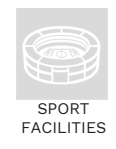


Key Advantages

- Professional light distribution makes maximum use of lumens
- Thanks to die-cast technology, achieve the aesthetic appearance
- Intelligent sensing provides a guarantee for high efficiency and energy saving
- Rectangular light type specially designed for warehouse aisles
- Multiple mounting options for replacement and new installations
- High visual comfort
- No hazardous materials
- Fast ROI thanks to long life span and reduced maintenance

Type of application

- ✓ INDUSTRIAL HALL & WAREHOUSE
- ✓ EXHIBITION CENTERS
- ✓ CAR PARKS
- ✓ SPORT FACILITIES
- ✓ LARGE AREAS
- ✓ SHOPPING MALLS



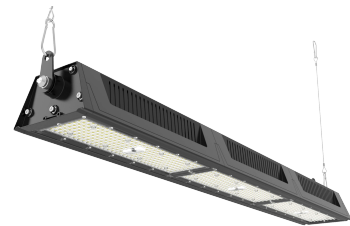
100W/120W



200W/240W



300W



400W/480W



PRO VERSION

PRODUCT CODE	POWER	LUMENS	LIGHT DISTRIBUTION	EFFICACY	DIMENSION LxWxH (mm)	
LHBTL39B17P100XXXX40-70	100W	17,000LM	30°x70° 60°x90° 40°x110°	170LM/W(Ra70)	388 x 150 x 85	
LHBTL39B16P100XXXX40-80		16,000LM		160LM/W(Ra80)		
LHBTL39B19P120XXXX40-70	120W	19,200LM		160LM/W(Ra70)		
LHBTL39B18P120XXXX40-80		18,000LM		150LM/W(Ra80)		
LHBTL74B34P200XXXX40-70	200W	34,000LM		170LM/W(Ra70)	741 x 150 x 85	
LHBTL74B32P200XXXX40-80		32,000LM		160LM/W(Ra80)		
LHBTL74B38P240XXXX40-70	240W	38,400LM		160LM/W(Ra70)		
LHBTL74B36P240XXXX40-80		36,000LM		150LM/W(Ra80)		
LHBTL109B51P300XXXX40-70	300W	51,000LM		40°x110°	170LM/W(Ra70)	1094 x 150 x 85
LHBTL109B48P300XXXX40-80		48,000LM			160LM/W(Ra80)	
LHBTL2M74B68P400XXXX40-70	400W	68,000LM			170LM/W(Ra70)	741 x 150 x 05
LHBTL2M74B60P400XXXX40-80		60,000LM			160LM/W(Ra80)	
LHBTL2M74B77P480XXXX40-70	480W	76,800LM	160LM/W(Ra70)			
LHBTL2M74B72P480XXXX40-80		72,000LM	150LM/W(Ra80)			

STANDARD VERSION

PRODUCT CODE	POWER	LUMENS	LIGHT DISTRIBUTION	EFFICACY	DIMENSION LxWxH (mm)	
LHBTL39B15S100XXXX40-70	100W	15,000LM	30°x70° 60°x90° 40°x110°	150LM/W(Ra70)	388 x 150 x 85	
LHBTL39B14S100XXXX40-80		14,000LM		140LM/W(Ra80)		
LHBTL39B17S120XXXX40-70	120W	16,800LM		140LM/W(Ra70)		
LHBTL39B16S120XXXX40-80		15,600LM		130LM/W(Ra80)		
LHBTL74B30S200XXXX40-70	200W	30,000LM		150LM/W(Ra70)	741 x 150 x 85	
LHBTL74B28S200XXXX40-80		28,000LM		140LM/W(Ra80)		
LHBTL74B34S240XXXX40-70	240W	33,600LM		140LM/W(Ra70)		
LHBTL74B31S240XXXX40-80		31,200LM		130LM/W(Ra80)		
LHBTL109B45S300XXXX40-70	300W	45,000LM		40°x110°	150LM/W(Ra70)	1094 x 150 x 85
LHBTL109B42S300XXXX40-80		42,000LM			140LM/W(Ra80)	
LHBTL2M74B60S400XXXX40-70	400W	60,000LM			150LM/W(Ra70)	741 x 150 x 05
LHBTL2M74B56S400XXXX40-80		56,000LM			140LM/W(Ra80)	
LHBTL2M74B67S480XXXX40-70	480W	67,200LM	140LM/W(Ra70)			
LHBTL2M74B62S480XXXX40-80		62,400LM	130LM/W(Ra80)			

PRODUCT CODING

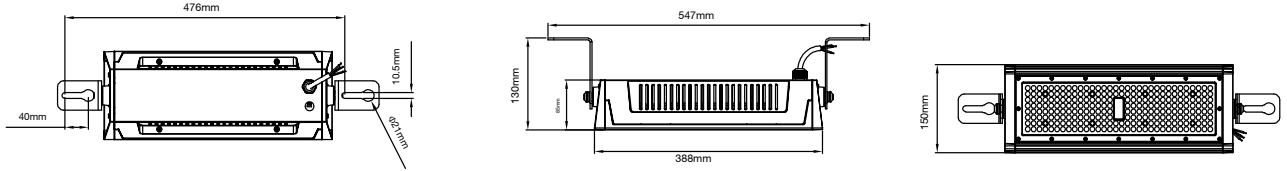
Ex.: LHBTL39B17P100XXXX40-70

XXXX - Denotes light distribution

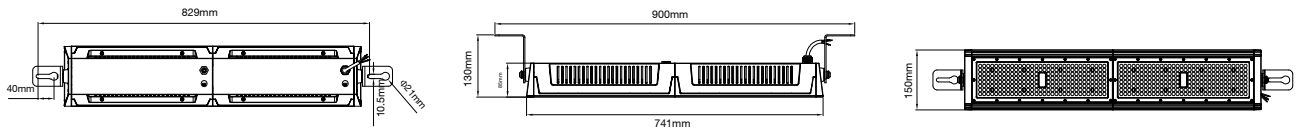
STANDARD CODE	LENGTH	COLOR	LUMENS	VERSION	POWER	LIGHT DISTRIBUTION	CCT	CRI
LHBTL	39 = 388mm	B = Black	17 = 17000lm	P = PRO	100 = 100W	3070 = 30°x70°	30 = 3000K	70 = Ra70
	74 = 741mm		Used first 2 nos. of lumen output	S = Standard	120 = 120W	6090 = 60°x90°	40 = 4000K	80 = Ra80
	109 = 1094mm				200 = 200W	40110 = 60°x90°	50 = 5000K	
	2M74 = 2 Modules of 741mm				240 = 240W		57 = 5700K	
					300 = 300W		65 = 6500K	
					400 = 400W			
					480 = 480W			

Product Drawing

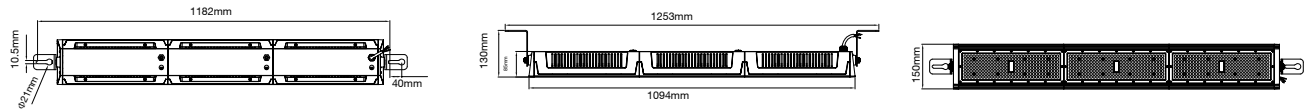
100W/120W



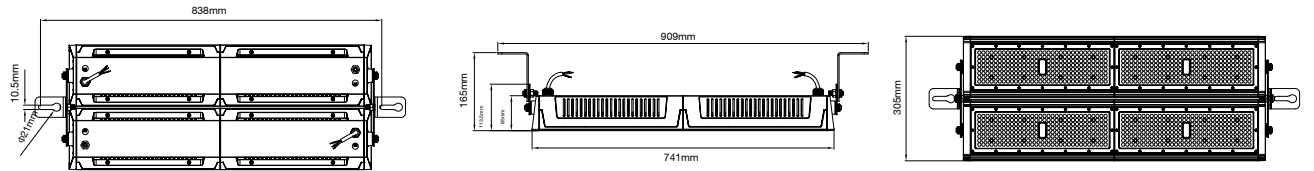
200W/240W



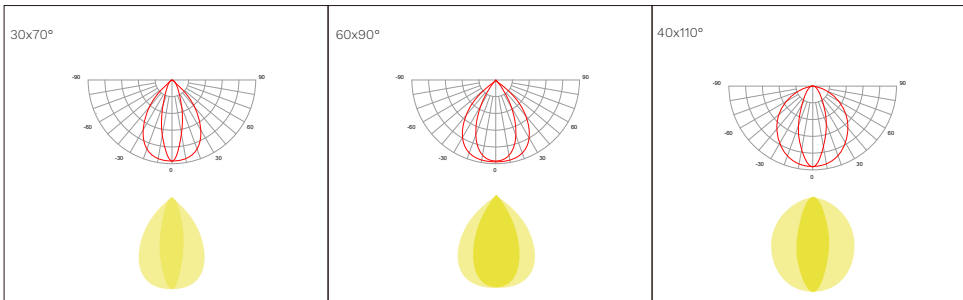
300W



400W/480W



Light Distribution



Optional Accessories



STANDARD	DESCRIPTION
60598-1	Luminaires – General requirements
60598-2-1	Luminaires – Part 2-1: Particular requirements – Fixed general purpose luminaires
60598-2-22	Luminaires – Emergency
61000-3-2	Electromagnetic compatibility (EMC) – Part 3-2: Limits – for harmonic current emissions
61000-3-3	Lamp controlgear – Part 1: General and safety requirements
61547	Equipment for general lighting purposes – EMC immunity requirements
55015	Limits and methods of measurement of radio disturbance characteristics of electrical lighting and similar equipment